



**Edmund Rice (1638) Assoc., Inc.**  
24 Buckman Drive  
Chelmsford, MA 01824-2156

## **EDMUND RICE (1638) ASSOCIATION NEWSLETTER**

Published Summer, Fall, Winter, Spring by the Edmund Rice (1638) Association, 24 Buckman Dr., Chelmsford MA 01824-2156

---

The Edmund Rice (1638) Association was established in 1851 and incorporated in 1934 to encourage antiquarian, genealogical, and historical research concerning the ancestors and descendants of Edmund Rice who settled in Sudbury, Massachusetts in 1638, and to promote fellowship among its members and friends.

The Association is an educational, non-profit organization recognized under section 501(c) (3) of the Internal Revenue Code.



# *Edmund Rice (1638) Association Newsletter*

24 Buckman Dr., Chelmsford MA 01824 Vol. 82, No.4 Fall 2008

## **President's Column**

Greetings, cousins!

Every now and then, I take a little time to browse through the Association membership list. (I confess: I'm an inveterate reader, and I also have been known to read phone books, dictionaries, and software license agreements -- though the latter can pall very quickly!)

It is interesting to see what a cross-section we have in the ERA. Of course, we are almost all residents of North America, but we live in 47 different states in the US and five different provinces in Canada, not to mention two members currently living in the eastern hemisphere. We have members with surnames that come from England, France, Germany, Ireland, Italy, Netherlands, Norway, Poland, Scotland, Spain, Sweden, and Wales. (I'm guessing in some cases, and in some cases that seem to be English, I imagine the names actually came from elsewhere and were anglicized.)

Ok, now here's a question you may want to ponder -- what fraction of the Association members are Rice by surname?

The answer is one in five -- more than all the Smiths, Joneses, Johnsons, and Robinsons combined, and then some. When you consider that Edmund Rice's descendants are now in the ninth through thirteenth generations (more or less) and that, unlike Edmund himself, his offspring had more or less balanced numbers of sons and daughters, you would expect that the Rice surname would make up something like 0.1% of the pool of eligible members of the Association, or perhaps a bit more because of cousin marriages along the way.

Obviously, there are other factors besides mere chance that draw some people in and not others. One of these factors is a sense of heritage, heightened by carrying the same surname as the founder. But what of Edmund's own heritage? After all these years, we have still not identified Edmund's parents, let alone his more distant ancestry. It has been fashionable, ever since the 1800's, to believe that Edmund was of Welsh extraction and that the surname was a patronymic "ap Rhys" abbreviated to "Rice". There may indeed be Rices whose name has that source, but we now have evidence, thanks to the DNA project, that Edmund himself was not Welsh in the paternal line. We see Edmund living in East Anglia at his earliest appearance in the public record, and there is now no reason to suppose that his ancestors had not been living there since the Middle Ages -- but of course, this is pure speculation.

Before I get carried away with speculation, I must comment on this year's big event -- we had a very successful reunion and annual meeting in Sudbury in September. There were about fifty participants, and they represented a fair sampling of the Association and its cross-section of North America. No one attended from overseas, but we came from east and west, north and south. You will see various reports on the goings-on inside this issue of the newsletter. For those of you who didn't attend, let this be the inspiration you need: see you next year!

--John Chandler

## **Inside This Issue**

Editor's Column	p. 2
The Database	p. 4
The Family Thicket	p. 5
Reunion Photos	p. 7
New Members	p. 12
Meet the Ancestor	p. 13
Membership Dues	p. 18
Books for Sale	p. 19

## Edmund Rice (1638) Association Newsletter

Send articles, corrections, member news, items of interest,  
obituaries, queries, etc. to the newsletter editor:

Perry L. Bent                      email: [era1638@hotmail.com](mailto:era1638@hotmail.com)  
807 Edgell Road, Framingham, MA 01701-3973

### Membership

The Edmund Rice (1638) Association, Inc. is governed by a Board of Directors, of at least five members, elected at the annual reunion and meeting, usually held on a weekend in September.

Descendants of Edmund Rice were holding reunions as early as 1851, but it was not until 1912 that the Association was formed and officers elected. Incorporation under Massachusetts law took place in 1934.

Membership is open to anyone who claims to be a lineal descendant of Edmund Rice. Rigorous proof is not required and many members have been able to ascertain their pedigree only after access to the books and files of other members. Spouses are also eligible for membership.

Annual dues, payable *September 1*, are:  
Initial dues.....\$ 15.00  
Renewals:  
    Under 80 years of age.....\$ 15.00  
    Age 80 and above.....\$ 5.00  
Life membership.....\$200.00  
    (single payment)

**Checks To:** EDMUND RICE (1638) ASSN., INC.

**Membership Mailing Address:**

Edmund Rice (1638) Association, Inc.  
c/o Perry L. Bent  
807 Edgell Road  
Framingham, MA 01701-3973

**Membership Email Address:**

[era1638@hotmail.com](mailto:era1638@hotmail.com)

**Address Corrections:**

The Post Office does NOT forward bulk mail. The return postage and re-mailing postage costs the Association nearly \$1.50 per copy.

*Your help with this is greatly appreciated.*

## Editor's Column

*Greetings from Massachusetts!*

I join our President in saying that the 2008 Reunion was a rousing success. It's always a lot of fun to meet and chat with our cousins and find out new information about our lines.

The arrangements and bus tour was flawless, thanks to George Rice, our Reunion Planner Extraordinaire. Believe it or not, he already has most of next year's reunion planned! Stay tuned for the Spring newsletter for more information.

In this newsletter, you will find photos and reports from the Reunion.

I am also going to reiterate a plea that was made on my behalf during the meeting. We are in need of someone to step up to be the Membership Chair in place of me—the newsletter and the membership tasks are too much for me to manage right now.

The Membership Chair is responsible for keeping an Excel spreadsheet list of paid and unpaid members, sending out dues reminders, and signing and sending out member cards. Membership reports are due at the executive board meetings twice a year (one of which is at the Reunion). Labels need to be made from the lists for each newsletter issue, also.

If you'd like to take it over, please let me or John Chandler know. It's a great way to get to know all your cousins!

– Perry Lowell Bent

*P.S. If you haven't paid your 2008-9 dues, this is your last newsletter! See enclosed payment form.*

### Website

**Edmund Rice (1638) Association**

[era1638@hotmail.com](mailto:era1638@hotmail.com)

**[www.edmund-rice.org](http://www.edmund-rice.org)**

## 2007 - 2008 Officers

**President, John F. Chandler**

**Vice President, George L. Rice**

**Vice President for Arrangements,  
Jeannette Pollard**

**Treasurer, Henry C. Trombley**

**Historian, George W. King**

**Membership, Perry L. Bent**  
807 Edgell Road, Framingham, MA 01701  
508-877-0393  
*era1638@hotmail.com*

**Book Custodian,  
William H. Drury**  
24 Buckman Dr., Chelmsford, MA 01824-2156  
*wdrury@alum.mit.edu*

**Recording Secretary, Dana Hastings**

**DNA Project, Robert V. Rice**

## 2007 - 2008 Directors

**Perry L. Bent, Newsletter Editor**  
807 Edgell Road, Framingham, MA 01701  
508-877-0393  
*era1638@hotmail.com*

**Kathleen H. Bond**

**Ruth M. Brown**

**Beth McAleer**

**Colonel Gary H. Rice, Ret.**

**Bob Royce**

**Timothy L. Sanford**

**Wendolin E. Wesen**

**Linda J. Wilson**

**Michael Rice**

## Past Presidents

1960-1963	Frederick R. Rice
1964-1965	William H. Hoefler
1966-1967	Ray Lowther Ellis
1968	Edgar W. Rice
1969	Erwin R. McLaughlin
1970-1973	Col. Allen F. Rice
1974	Margaret E. Allen
1975	Charles W. Rice
1976	Seaver M. Rice
1977-1978	Henry E. Rice, Jr.
1979-1980	C. Whiting Rice
1981-1982	William H. Drury
1983	Patricia P. MacFarland
1984-1985	Janice R. Parmenter
1986-1987	Margaret S. Rice
1988-1989	Alex W. Snow
1990-1993	John S. Bates
1994	Alex W. Snow
1995-1997	Frederick H. Rice
1998-2006	Dr. Robert V. Rice

## Memorial Gifts

Consider donating to the Edmund Rice Association in memory of a loved one.

*Theresa Jemison passed away November 24<sup>th</sup> around 5a in her sleep. She had celebrated her 90th birthday on Nov 11, 2008. She was always glad that she had been to the Rice gatherings. She will be missed.*

## The ERA Database

Our computer database has been and will continue to be essential for DNA studies for Edmund Rice descendants and the descendants of other early Sudbury families. We need your continuing support. If you have not submitted your family line to us, why wait any longer? Questions? Contact our Historian at: *gking5 @ cox.net*

## Nine-Generation Rice Database Available on CD

Your Board of Directors (BoD) agreed that we would offer the nine-generation report and database to our members (only). The BoD approved a charge of \$10 postpaid for a CD-ROM containing both documents. Please order from the Treasurer by sending a check or money order for \$10 to him with a request for the CD-ROM.

The BoD placed three caveats on the distribution of these documents:

- 1) The information is copyrighted by the Edmund Rice (1638) Association and is restricted to the personal use of association members.
- 2) The CDs will be available only to Association members who agree to its terms of use.
- 3) The Association master database is an ongoing effort. This CD-ROM represents our database effort as of September 2007. If you find any documentable errors, please let us know!

## Research and Submit Your “Umbilical Lineage”

The women whom Rice men married have contributed to our genetic heritage in equal proportion, and also have a very special set of genetic markers passed down to us today.

Mitochondrial DNA (mtDNA) is passed solely by mothers to their children, both to males and females. However, only mothers can pass mtDNA: fathers only pass their YDNA to their sons.

Research your lineage through your mother->grandmother->great-grandmother and onward, and submit it to the ERA. Consider having your mtDNA tested, too!

Contact the DNA Project coordinator at *rvrbarre @ verizon.net* for more information.

# THE FAMILY THICKET, PART XV

by John Chandler

*This is the latest in a series of articles highlighting the complex relationships among the descendants of Edmund Rice. Each article focuses on one early Massachusetts immigrant and his wife (or wives) and offspring and uncovers some of the ways in which the offspring are connected by marriage to the extended Rice family within a few generations. Many of the people mentioned here are included in our Association's database, but some of those are omitted even so from the on-line 6-generation descendency report because the latter concentrates on Edmund Rice's descendants and ventures only as far afield as their spouses and spouses' parents.*

**Simon Stone**, the focus of this piece, was in many ways like Edmund Rice. He, too, was a middle-aged emigrant from the southeast of England who came over in the 1630's with a sizable family and had at least one more child after arriving in Massachusetts. He, too, settled in what was then the frontier and became a prominent citizen of his town (Watertown in Simon's case). Each man became a deacon of his church. When Edmund Rice came over, the frontier had already moved westward, but it is thought that he sojourned briefly in Watertown before moving on to Sudbury. Like Thomasine (Frost) Rice, Simon's wife Jane (Clarke) died first, in the 1650's, and Simon remarried, choosing widow Sarah Lumpkin of Ipswich. In this case, there were no further children, and Simon outlived his second wife as well. The pre-emigration conditions are similar to the Rices', in that the Stones' home county, Essex, lies between and touches on both the Rices' original county of Suffolk and the subsequent Hertfordshire. Also, both families left a "footprint" in the parish records, providing a clear connection between the known New World family and the Old World original. The main difference is that Simon's own baptism is on record in his home parish, and so we can connect him to several generations of forebears.

One final similarity: each man's male-line descendency was compiled by a prominent genealogist with the aid and encouragement of a family association. In the Stone case, it was by J. Gardner Bartlett, who published his 800-page *Simon Stone Genealogy* in 1926.

Of Simon's seven known children, only four reached adulthood, two male and two female. Reflecting the patrilocal European tradition, both daughters married and moved away from the Watertown area, one to the southeast and one to the northeast, but both sons stayed put and raised families that lived near Edmund Rice's descendants and ultimately married into the Rice thicket.

1. **Frances** (1619-?) married first Rev. Henry Green, minister of Reading, Massachusetts, and later Deacon John Horne of Salem. She had six children in all, and one of them was named Simon, after her father, but the focus of her family life was the new home in the northeast corner of Massachusetts, and I have not found any intermarriages with Edmund Rice's clan within many generations.
2. **Mary** (1621-?) died young.
3. **Ann** (1624-?). Savage's *Genealogical Dictionary* says she may have married Lewis Jones, but Bartlett concludes she probably did not marry and in any case died without issue. She is not mentioned in Simon Stone's will.
4. **Simon** (1631-1708) married Mary Whipple and had twelve children, of which three enter into our story. First, their son Matthew had a son Adams (sic) who married Hannah<sup>4</sup> Rice (Ephraim<sup>3</sup>, Thomas<sup>2</sup>, Edmund<sup>1</sup>). Incidentally, the mother of Ephraim<sup>3</sup> Rice was Mary King, daughter of Thomas King featured in *Thicket XIV*. Second, their son David married Mary<sup>3</sup> Rice (Joseph<sup>2</sup>, Edmund<sup>1</sup>). Third, their daughter Susanna had two Goddard children who

married into the thicket: Susannah, who married John<sup>4</sup> Drury (Rachel<sup>3</sup> Rice, Henry<sup>2</sup>, Edmund<sup>1</sup>), and David, who married Mercy<sup>4</sup> Stone (Mary<sup>3</sup> Rice, Joseph<sup>2</sup>, Edmund<sup>1</sup>). It should be noted that Susannah's husband John<sup>4</sup> Drury has an alternate line (with more generations) to Edmund: Thomas<sup>4</sup>, John<sup>3</sup>, Lydia<sup>2</sup> Rice, Edmund<sup>1</sup>. Also, harking back again to previous articles, I note that the mother of Rachel<sup>3</sup> Rice was Elizabeth Moore, daughter of John Moore featured in *Thicket IX*. Finally, observe that the father of Mercy<sup>4</sup> Stone was David Stone mentioned above, that is to say, she was the first cousin of her husband David Goddard.

5. **Mary** (1632-1684) married Nathaniel Stearns of Dedham, Massachusetts, and had four children, but again I could not find any of her descendants who got tangled in the Rice family thicket. Indeed, there are many connections with people named Stearns, but they all trace back to other Stearns forebears.
6. **John** (1635-1691) married Sarah Bass and had ten children, of which two wandered into the thicket. (A) Their daughter Sarah's grandson Isaac Cutting had two daughters, Sarah and Lucy, who respectively married a pair of Damon brothers, William<sup>5</sup> and Isaac<sup>5</sup> Damon (Abigail<sup>4</sup> Rice, Isaac<sup>3</sup>, Matthew<sup>2</sup>, Edmund<sup>1</sup>). It may be of interest to note that the mother of Isaac<sup>3</sup> Rice was Martha Lamson featured in one of the umbilical lineages covered in our Colonial Sudbury mtDNA project (see [http://edmund-rice.org/sudbury\\_dna.htm](http://edmund-rice.org/sudbury_dna.htm)). Also, another grandson of Sarah Stone, Munnings Sawin, had a son Benjamin who married Martha<sup>7</sup> How (Dorothy<sup>6</sup> Howe, Ruth<sup>5</sup> Brigham, Jonathan<sup>4</sup>, Mary<sup>3</sup> Rice, Henry<sup>2</sup>, Edmund<sup>1</sup>). The annotations abound for Martha<sup>7</sup> How: her father was Cyprian How, scion of a line of John Hows going back to John How featured in *Thicket III*; her maternal grandfather was Joseph Howe, grandson of Abraham How featured in *Thicket VII*; the mother of Ruth<sup>5</sup> Brigham was Mary Fay, granddaughter of John Fay featured in *Thicket V* and of Thomas Brigham featured in *Thicket II* (are you keeping count?); and, lastly, the simultaneous Brigham and Fay connections mean that Mary Fay's husband, Jonathan<sup>3</sup> Brigham, was also her first cousin. Meanwhile, we can see that the Stone descendants in this section were all in the sixth generation counting from Simon, but their Rice-descendant spouses were in the fifth and seventh generations counting from Edmund. Nobody can say that keeping up with genealogy is easy! (B) John and Sarah's daughter Joanna had a grandson Nathan Hastings who married Lois<sup>5</sup> Rice (Absalom<sup>4</sup>, Jonas<sup>3</sup>, Thomas<sup>2</sup>, Edmund<sup>1</sup>). The mother of Absalom<sup>4</sup> Rice was Mary Stone from a different line of Stones that will probably be featured in a future Thicket article.
7. **Elizabeth** (1639-?) presumably died young.

In the end, the message is the same as in the previous Thicket articles: the reality of genealogy is very different from the “tree” concept so often portrayed – the branches are thoroughly intertwined, like a hedge ... or a thicket.

## **The ERA Reunion – 9/19 to 9/20**



**At the Edmund Rice homesite, cousins gather around George Rice for more info.**



**At the Edmund Rice homesite.**





**At the Edmund Rice homesite on the bus tour.**



**A Rice home.**



**At the Edmund Rice gravestone.**



**At the Sudbury Revolutionary War cemetery.**



**Cousins gather at the Wayside Inn Ballroom for dinner.**



**Our guest speaker, Dr. K. David Goss, a professor of history at Gordon College.**



**ERA President, John Chandler.**



**L to R: Your newsletter editor Perry Bent; ERA VP and reunion planner, George Rice; ERA Historian George King and wife Ann, and board member Dana Hastings.**

## **WELCOME NEW ERA MEMBERS**

Rosemary Cohen of Salem, OR  
Brian Lawson of Gardiner, ME  
Celia Lewis of Vancouver, BC  
Craig McCartney of Redwood City, CA  
Robert Rice of Mechanicsburg, PA  
Pamela Steward Speciale of Charlestown, MA  
Thomas P. Walker of Kenai, AK  
Patricia Young of Elk Rapids, MI

**And new life member:**

Katrina Rice Schmidt of Ojai, CA

**We hope to see you all at a future Reunion!**



## Meet the Ancestors

### MARY ALICE RICE

By William H. Drury

Mary Alice Rice (always known as Alice) was born November 7, 1848, the youngest of the five children of Abel Rice and Mary Howe Bigelow. Both families had lived for generations in or near Marlboro where Alice was born. She spent a disastrous year teaching school before marrying a young Universalist minister, George William Perry, on July 7, 1866. Through the years, George was to serve parishes in Lynn, Lawrence and Springfield, Massachusetts, as well as Auburn, Maine, and Rutland, Vermont. They had six children, the eldest, Lulu, was my maternal grandmother.

The Perrys started a camp for the boys of his Rutland church because, being Universalists, they were not considered Christians, and were therefore barred from the Rutland YMCA. One hundred seventeen years later, Eagle Camp is still going strong as a family camp in South Hero, VT. Alice cleaned, cooked, patched, nursed, and consoled many generations of campers. Both she and George passed away in 1928 after making arrangements for the incorporation of the camp to preserve its posterity.



Alice about 1870



Alice

The descendants of George and Alice have remained very close, and a large amount of historical material has been preserved, both at Eagle Camp and in private hands. George was an amateur photographer, and I have many of his pictures, postcards and glass-plate negatives. Lulu wrote to her mother weekly and those letters from 1888 to 1903 have been typed and printed. The originals are at the Schlesinger Library of Harvard University.

Much of this material and many of the photos provided by Helen Perry Smith.

Meet the Ancestors - continued

Happiness Peace Modesty Beauty & Love  
Happiness Peace Modesty Beauty & Love  
Happiness Peace Modesty Beauty & Love  
Happiness Peace Modesty Beauty & Love  
Happiness Peace Modesty Beauty & Love  
Happiness Peace Modesty Beauty & Love  
Happiness Peace Modesty Beauty & Love  
Happiness Peace Modesty Beauty & Love  
Happiness Peace Modesty Beauty & Love  
Happiness Peace Modesty Beauty & Love

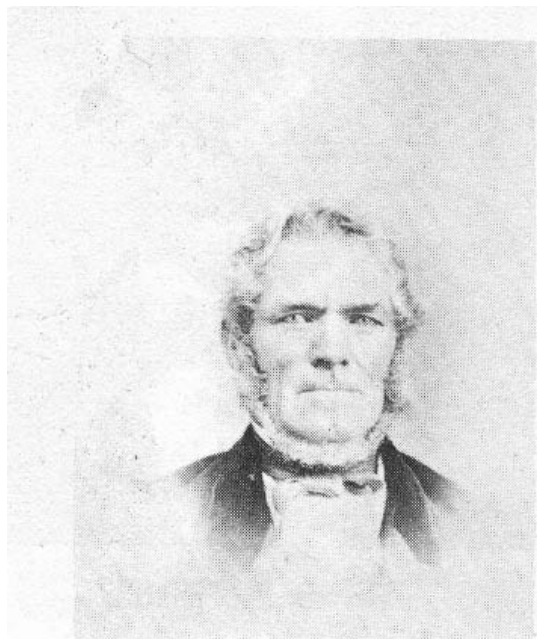
The day is past and gone,

The evening shades appear;

O! may we all remember well

A page from the 1828 copybook of Mary Howe Bigelow, age 12, at the Robin Hill School.

## Meet the Ancestors - continued



**Alice's father, Abel Rice**  
[1807-1882]



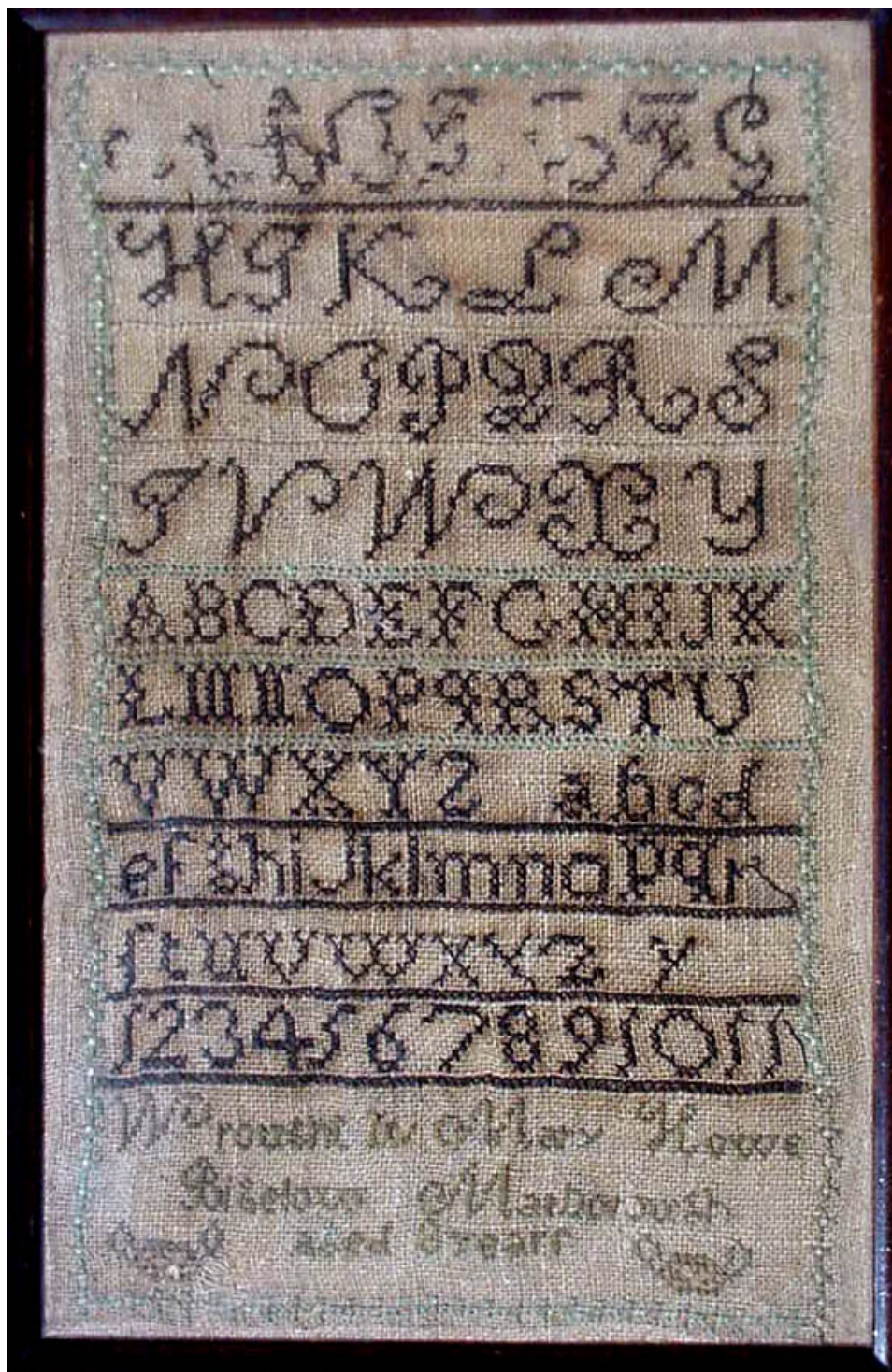
**Alice's mother, Mary Bigelow Rice**  
[1815-1904]



Alice about 1910

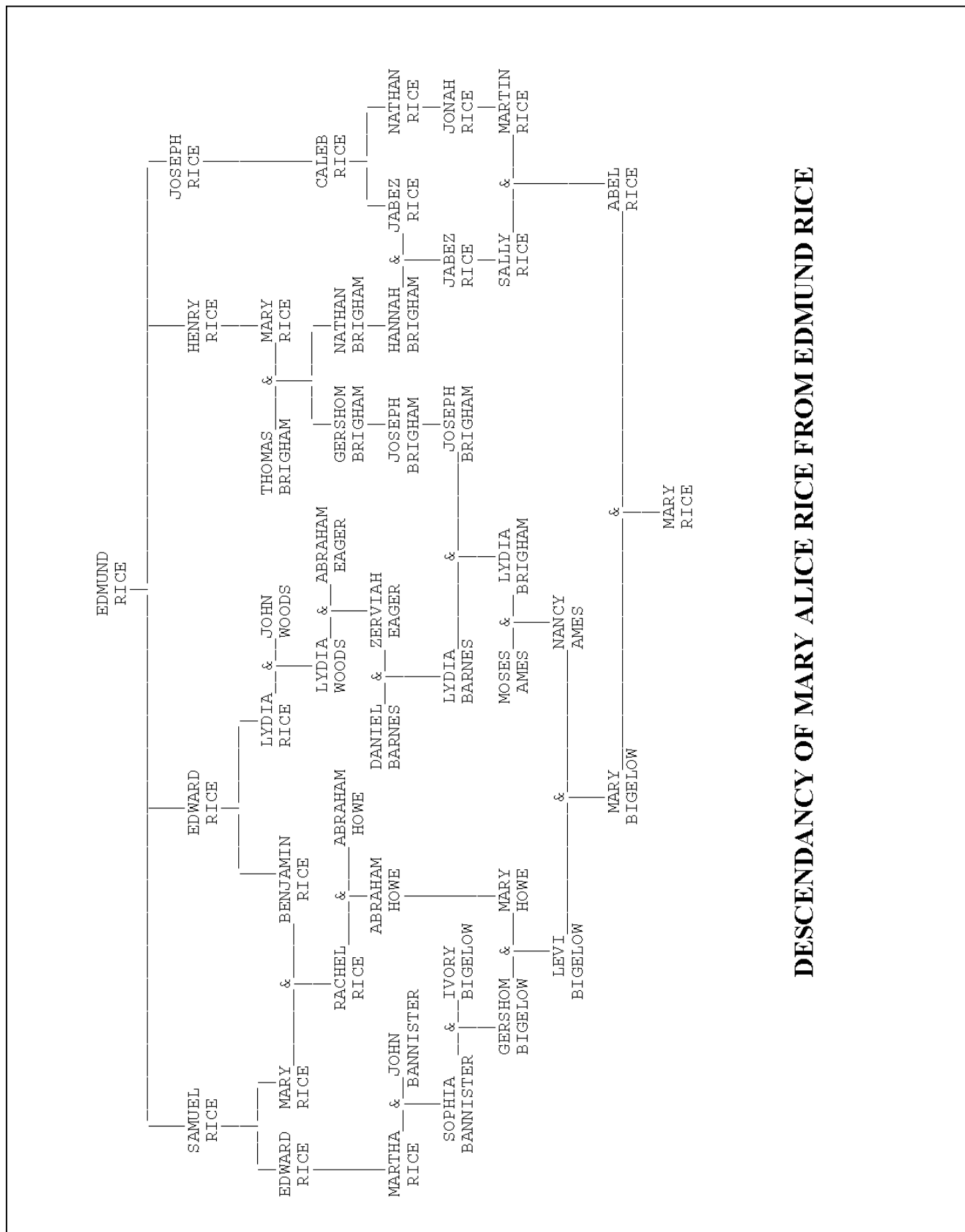


Meet the Ancestors - continued



Text at bottom of sampler reads  
"Wrought by Mary Howe Bigelow  
Marlborough, aged 8 years"

# Meet the Ancestors - continued



**DESCENDANCY OF MARY ALICE RICE FROM EDMUND RICE**



**THE EDMUND RICE ASSOCIATION, INC.**

Perry L. Bent  
ERA Membership Chair  
807 Edgell Road  
Framingham, MA 01701-3973

December 1, 2008

Dear Cousin,

It's that time again! Please check your member card—if your membership date is "through September 1, 2008", then your membership has run out and this is your last newsletter! If you have already sent in your dues, be assured that your new member card is on its way!

Name \_\_\_\_\_

Address \_\_\_\_\_

City/State \_\_\_\_\_

Postal Code \_\_\_\_\_

Phone \_\_\_\_\_

Email \_\_\_\_\_

Annual dues for 2008-2009, payable September 1 <sup>st</sup> 2008	\$ _____
Additional voluntary contribution	\$ _____
Total	\$ _____

The schedule of dues is as follows:

Under age 80	\$15.00
Age 80 and above	\$5.00
Life membership (in a single payment)	\$200.00

*Note: Dues rate is per person; there is no discount for a spouse.*

*The Board of Directors voted to insert the "Additional Voluntary Contribution" line in an attempt to offset the erosion of our treasury due to the current low interest rates. Your additional contributions are appreciated.*

Please make your check to The Edmund Rice Assn., Inc. and send to:

Perry L. Bent  
ERA Membership  
807 Edgell Road  
Framingham, MA 01701-3973

Or renew online at: [www.edmund-rice.org](http://www.edmund-rice.org)

If you've already sent in your dues — THANK YOU!

Sincerely,

## Rice Books Available

**The Rice Family**, by Andrew Henshaw Ward [**\$5**] 110 pages

Hard-cover reprint. New, unused. A genealogical history of descendants of Deacon Edmund Rice who came from Berkhamstead, England, and settled in Sudbury, Massachusetts, in 1638. 379 pages. Includes a soft-cover supplement (1967) containing additions and corrections.

**The Rice Family, Supplement 2 (Part 1)** [**\$7**] 224 pages

Supplement Number 2 (Part 1) to *The Rice Family*, compiled by Margaret S. Rice (1983). Hard-cover reprint. New, unused. Additional lines of descent through the first eight generations, which were unknown at the time of publication of *The Rice Family* and the 1967 supplement.

**The Rice Family, Supplement 2 (Part 2)** [**\$8**] 720 pages

Supplement Number 2 (Part 1) to *The Rice Family*, compiled by Margaret S. Rice (1985). Hard-cover reprint. New, unused. A continuation of *The Rice Family Supplement 2 (Part 1)* from the ninth generation to the present (1985).

**Edmund Rice and His Family and We Sought the Wilderness** [**\$5**] 357 pages

Two manuscripts in one binding. Hard-cover reprint. 1986. New, unused.

*Edmund Rice and His Family*, by Elsie Hawes Smith (1938) An historical narrative about the early days of the Rices. Contains much genealogical information, as well as being a charming story.

*We Sought the Wilderness*, by Rev. Claton Rice (1949) An historical narrative based on those Rices who pushed Westward to the prairies after short stays in New Hampshire and Vermont.

### More Books... by our cousins

**Frederic A. Wallace**, Framingham's Town Historian, is the author of "**Ancestors and Descendants of the Rice Brothers of Springfield, Mass.:** David Rice, William Marsh Rice, Caleb Hall Rice, Frederick Allyn Rice, Seven Generations – 1704 to 2004". This is a serious genealogy and history of the family descended from David Rice, who first appeared in the records of Milton and Weymouth, Mass., around 1725. Special attention is given to four brothers, born in Springfield, Mass., who went to Texas in the early to mid-1800's to seek their fortunes. One, William Marsh Rice, became the founder of Rice University in Houston. Their story is a classic example of a family torn apart by the Civil War. DNA evidence, obtained through the ERA's Rice Family DNA Project, is presented to resolve longstanding questions about the origins of this line. From the author, \$30 (includes postage to the continental US): Frederic A. Wallace, 53 Eaton Road, Framingham, MA 01701.

**Mildred L. Henschel** is the author of **Lickiss Families and English Ancestors** consists of 292 pages and is spiral-bound with laminated covers. It consists of 3 parts: the first is English Ancestors, which includes Rice, Towne, Ball, Boland, Bullard, Mellen, Southworth, Whale, French, Fox, Frost, Moore, and Hancock. The second part starts with Hancock-- Sarah Jane who married the first John Lickiss to come to America and their descendants. The 3rd part consists of other Lickiss families, and includes a Table of Contents and Index. Price is \$45, postage and handling included. Mailing address is: 835 Valentine Dr., Dubuque, IA. 52003-0211.